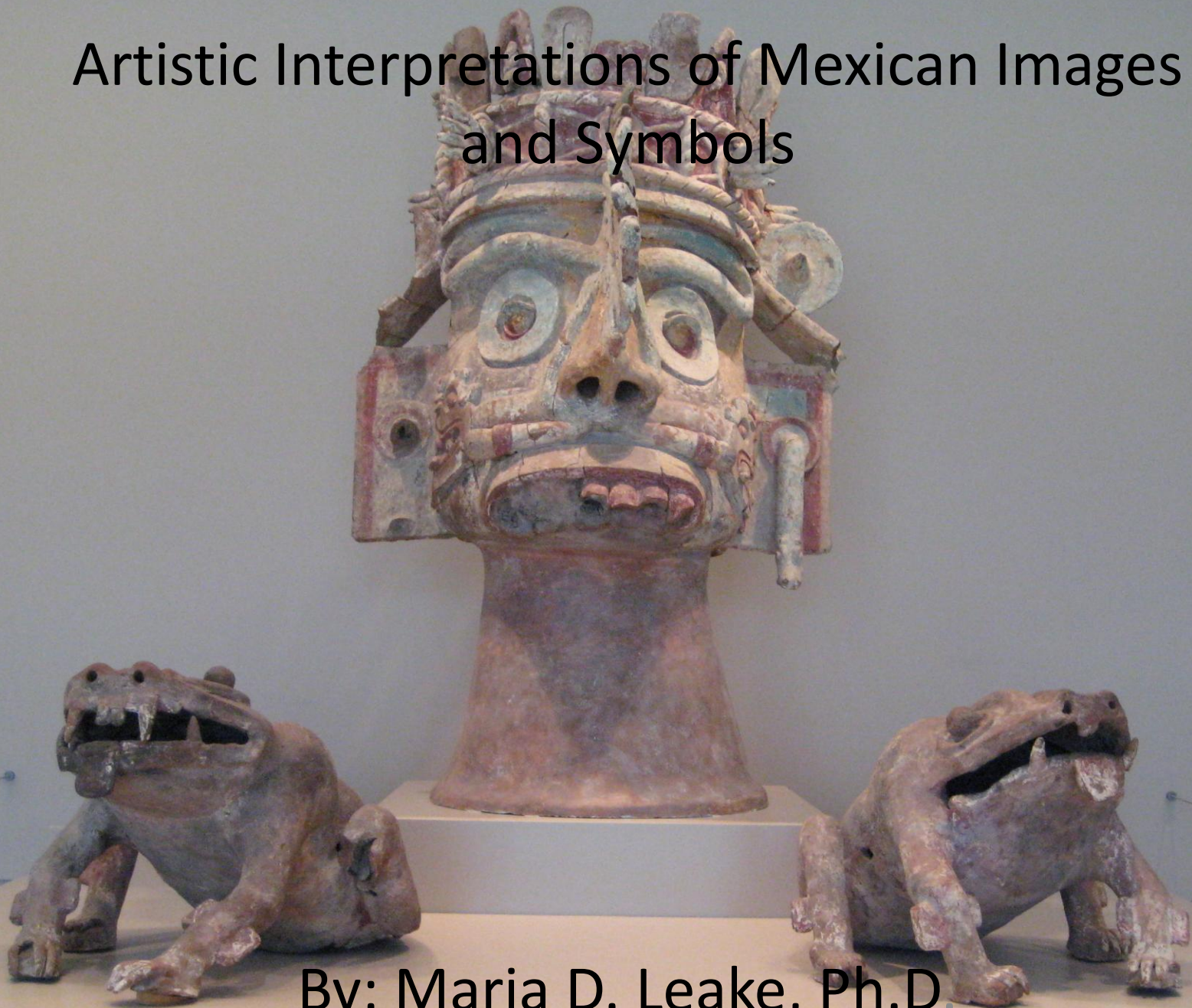


# Artistic Interpretations of Mexican Images and Symbols



By: Maria D. Leake, Ph.D.

Interpreting Symbols: What do these symbols mean to you?



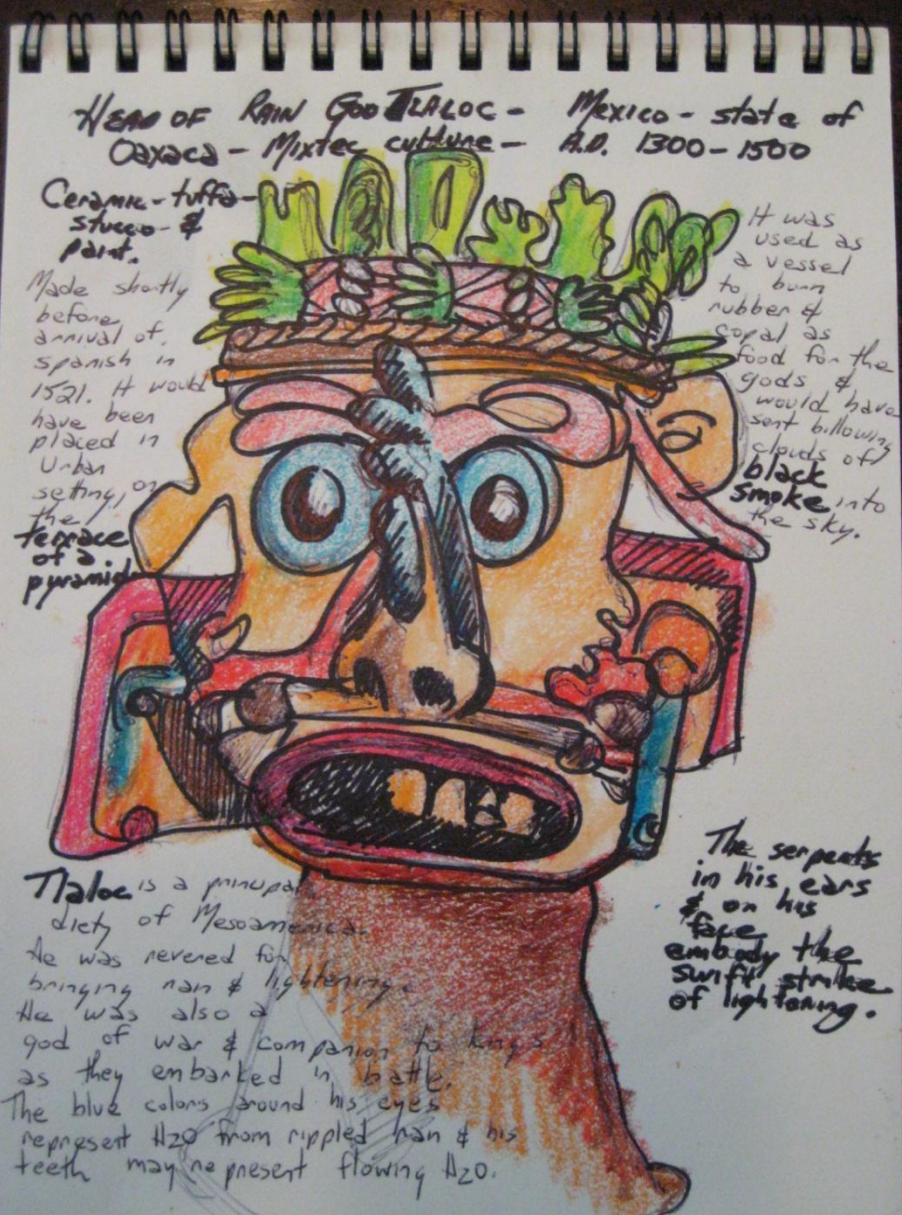
What about this symbol?





# Artistic Interpretation of Tlaloc, The Rain God

(Image of Tlaloc is from the Dallas Museum of Art /DMA Collection)



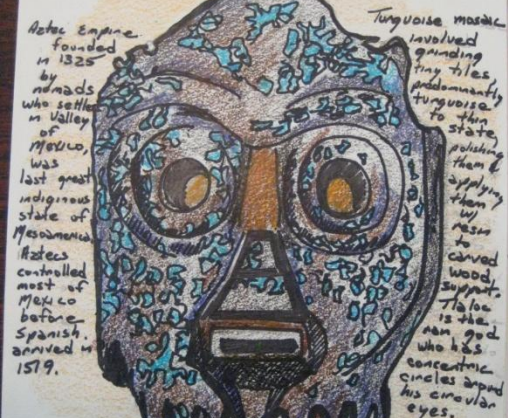


Mask - OLMEC CULTURE - 900 - 500 B.C. -  
 Jadeite - MEXICO - STATE OF TABASCO -  
 The Mesoamerican people believed the mask  
 always revealed the true inner being  
 of an individual.



Above: Two views of Jadeite mask from DMA Collection  
 Below: Mask of Tlaloc from DMA Collection (Center) and Mosaic covered  
 skull from National Museum of Anthropology in Mexico City (Right)

Mask - TLALOC - MIXTEC-AZTEC CULTURE -  
 A.D. 1350 - 1521 - WOOD, TURQUOISE - SHELL -  
 LIGNITE & RESIN.



Turquoise mosaic  
 involved grinding  
 tiny tiles,  
 predominantly  
 turquoise,  
 to form  
 state,  
 polishing  
 them &  
 applying  
 them w/  
 resin to  
 carved  
 wood,  
 support.  
 Tlaloc  
 is the  
 rain god  
 who has  
 concentric  
 circles around  
 his circular  
 eyes.

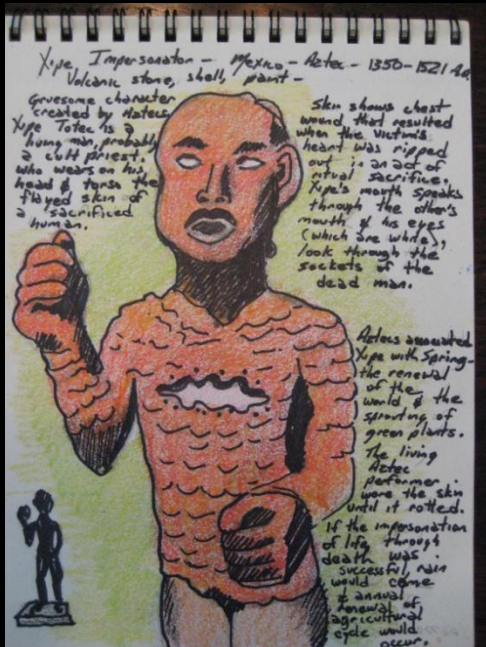
For the Aztecs, turquoise symbolized the preciousness  
 of life, the blue of the daytime sky, & the blue of  
 water, which was associated w/ Tlaloc.  
 This mask may have been worn by god impersonator,  
 or placed on head of wrapped body of deceased  
 ruler for his cremation.







## Drawings based on DMA Ancient Art of the Americas Collection







Reinterpreting Symbolic Images of Pre-Hispanic Mammals, Insects, and Birds in Black and White and Color







(Artistic Interpretations)

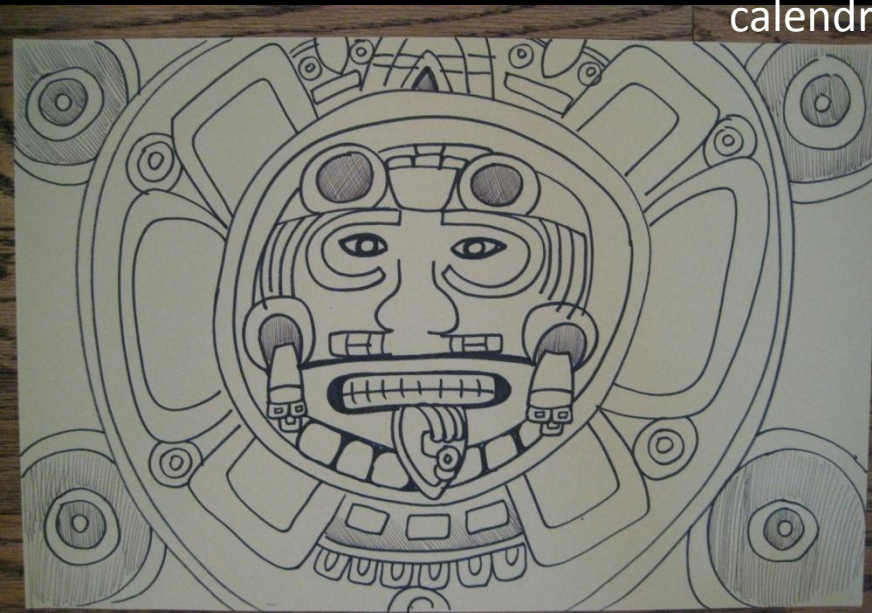
Images from Mexican Museum Collections







The Sun Stone, also known as the Aztec Calendar, in the National Museum of Anthropology in Mexico City is a representation of pre-Hispanic cosmogonic and calendrical knowledge.





# **What kind of artistic interpretation of Mexican art would you like to make?**

**Step #1: Sketch out your idea in a black and white drawing.**

**Step #2: Fill in any empty space, or negative space, with patterns and designs.**

**Step #3: Outline your drawing with a black marker.**

**Step #4: Color in your image with colored pencils.**

**Step #5: Frame your art for public display.**

**Step #6: Write a short label card that will be displayed next to your art. (Name, Age, Title of Work, Brief Description of Meaning of Work)**